



# ELEPHANT STRUCTURES

QUALITY, CUSTOMER SERVICE & BEST PRICES!

Free Pricing Estimator Online at: [WWW.CARPORT.COM](http://WWW.CARPORT.COM)

## MOTORHOME CARPORT COVER

**CALL NOW: (855) 227-7678**

Monday - Friday, 8:30 to 7:00 Eastern; Saturday, 10:00 to 3:00; Sunday closed

**#31229**

**18 X 26 METAL RV CARPORT REGULAR STYLE**

**CALL NOW TO ORDER!**



If you need an affordable way to protect your RV or motorhome in between road trips, consider this 18x26 Motorhome Carport. With dimensions of 18' wide x 26' long, there is enough space to fit two cars or trucks side by side. With 12' tall legs, the carport cover is large enough to fit almost any RV or mobile home underneath the roof. The carport has an extended gable on one end, with extra side panels for increased shielding from inclement weather. Choose from our large color selection to match your personal style and other buildings on your property. You can also customize your carport dimensions, features, and much more.

GET INSTANT PRICING ONLINE. PRICE MAY VARY BY ZIP CODE

WIDTH	LENGTH	HEIGHT	GARAGE DOOR	WALK-IN DOOR	WINDOWS
<b>18</b>	<b>26</b>	<b>12</b>	<b>0</b>	<b>0</b>	<b>0</b>

SQ FT ..... 468  
 CARS ..... TWO CAR  
 ROOF STYLE ..... REGULAR  
 ROOF COLOR ..... WHITE  
 METAL TRIM ..... BURGUNDY  
 CERTIFICATION ..... OPTIONAL  
 FRAME GAUGE ..... 14 GAUGE  
 WALL STYLE ..... EXTRA PANELING  
 WALL ORIENTATION ..... HORIZONTAL  
 WALL COLOR ..... WHITE  
 END STYLE ..... OPEN  
 END ORIENTATION ..... N/A  
 END COLOR ..... N/A  
 GARAGE DOORS ..... 0  
 ACCESS DOORS ..... 0  
 WINDOWS ..... 0

**18' WIDE x 26' LONG x 12' TALL**

**LAND/CEMENT FOUNDATION MUST BE LEVEL**



- Cement should be 1 ft. shorter than roof length.
- Cement must be level and square from corner to corner.
- Return trip fees will apply if building is not installed.

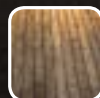


In order to get the highest quality installation, we ask to have the site prepared and ready to go on the day of installation. There should be no electrical wires less than 15 feet above the peak height and confirm no underground utilities will be impacted by the installation process (must be 4' or more beneath the impacted areas for ground installation). Remember, all of our structures come with free installation and free delivery.

**INSTALLATION SURFACES**



GRASS



WOODEN  
DECKING/DOCKS



GRAVEL



CONCRETE



DIRT

**SCAN TO VIEW ONLINE**



AVAILABLE PAINT COLOR CHOICES NOTE: ACTUAL COLORS MAY VARY



Barn Red



Burgundy



Brown



Forest Green



Beige



Sandstone



Tan



Galvalume



Clay



White



Dark Gray



Light Gray



Slate Blue

**PRICES VARY ON LOCATION • FREE DELIVERY & FREE INSTALLATION!**



SHOP ONLINE WITH INSTANT LOCAL PRICING AT [WWW.CARPORT.COM](http://WWW.CARPORT.COM)