



ELEPHANT STRUCTURES

QUALITY, CUSTOMER SERVICE & BEST PRICES!

Free Pricing Estimator Online at: WWW.CARPORT.COM



TWO CAR GARAGE

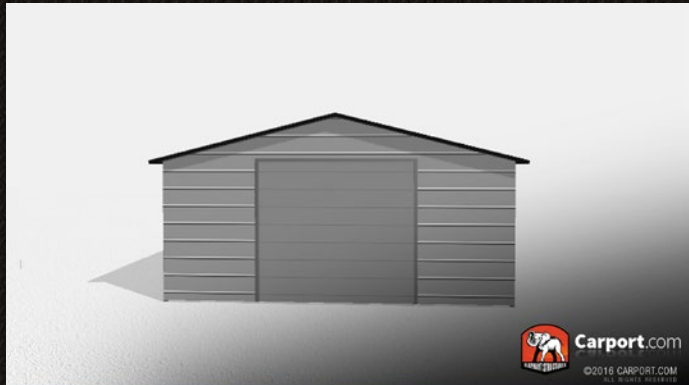
CALL NOW: (855) 227-7678

Monday - Thursday, 8:30 to 9:00 Eastern, Friday 8:30 to 7:00, and Saturday 10:00 to 3:00.

#30768

CLEARANCE TWO CAR METAL GARAGE

SAVE \$580 TODAY, CALL NOW!



This two car metal garage is perfect for anyone looking for a metal building at a great price. The garage regularly retails for \$4210 or more, but you can save big today with **Elephant Structures**. Building specifications include dimensions of 20' wide x 31' long x 8' tall, a 14 gauge galvanized steel frame, and a boxed eave roof with 29 gauge panels. The garage has 620 square feet of floor space and includes a 9' wide x 7' tall garage door on the front of the building.

If you are looking for a metal garage at a great price, ask about our exclusive factory clearance building kits. These are second quality, 'scratch and dent' DIY kits ready for factory pick up, or to ship direct to your door – call for complete details. Save big on this two car metal garage today, but hurry, only while supplies last!

GET INSTANT PRICING ONLINE. PRICE MAY VARY BY ZIP CODE

WIDTH	LENGTH	HEIGHT	GARAGE DOOR	WALK-IN DOOR	WINDOWS
20	31	8	1	0	0

ROOF STYLE BOXED EAVE
ROOF COLOR WHITE
METAL TRIM BLACK
CERTIFICATION AVAILABLE UPGRADE
FRAME GAUGE 14 GAUGE
WALL STYLE CLOSED
WALL ORIENTATION HORIZONTAL
WALL COLOR WHITE
END STYLE CLOSED
END ORIENTATION HORIZONTAL
END COLOR WHITE
GARAGE DOORS 9' X 7'
ACCESS DOORS OPTIONAL
WINDOWS OPTIONAL

20' WIDE x 31' LONG x 8' TALL

AVAILABLE PAINT COLOR CHOICES NOTE: ACTUAL COLORS MAY VARY



Barn Red



Burgundy



Brown



Forest Green



Beige



Sandstone



Tan



Galvalume



Clay



White



Dark Gray



Light Gray

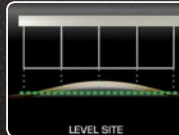


Slate Blue

LAND/CEMENT FOUNDATION MUST BE LEVEL



CONCRETE PAD



LEVEL SITE

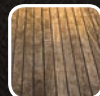
- Cement should be 1 ft. shorter than roof length.
- Cement must be level and square from corner to corner.
- Return trip fees will apply if building is not installed.

In order to get the highest quality installation, we ask to have the site prepared and ready to go on the day of installation. There should be no electrical wires less than 15 feet above the peak height and confirm no underground utilities will be impacted by the installation process (must be 4' or more beneath the impacted areas for ground installation). Remember, all of our structures come with free installation and free delivery.

INSTALLATION SURFACES



GRASS



WOODEN
DECKING/DOCKS



GRAVEL



CONCRETE



DIRT

SCAN TO VIEW ONLINE



PRICES VARY ON LOCATION • FREE DELIVERY & FREE INSTALLATION!



SHOP ONLINE WITH INSTANT LOCAL PRICING AT WWW.CARPORT.COM