



# ELEPHANT STRUCTURES

QUALITY, CUSTOMER SERVICE & BEST PRICES!

Free Pricing Estimator Online at: [WWW.CARPORT.COM](http://WWW.CARPORT.COM)

## METAL SHELTER

**CALL NOW: (855) 227-7678**

Monday - Friday, 8:30 to 7:00 Eastern; Saturday, 10:00 to 3:00; Sunday closed

**#32274**

**METAL CAR SHELTER WITH GABLES**

**CALL NOW TO ORDER!**



Manufactured using only high-strength steel and designed to last for years, this custom car shelter could be the perfect storage or building solution for your home or business. This car shelter measures 22' wide and 26' long and features six custom frameouts for better accessibility and convenience.

With nearly 600 square feet of storage space, you can easily store all of your tools, equipment or vehicles and protect them from the threat of severe weather. All of our buildings can be designed and certified to withstand severe weather conditions specific to your area.

GET INSTANT PRICING ONLINE. PRICE MAY VARY BY ZIP CODE

WIDTH	LENGTH	HEIGHT	GARAGE DOOR	WALK-IN DOOR	WINDOWS
<b>22</b>	<b>26</b>	<b>8</b>	<b>0</b>	<b>0</b>	<b>0</b>

**SQ FT** ..... 572  
**CARS** ..... TWO CAR  
**ROOF STYLE** ..... BOXED EAVE  
**ROOF COLOR** ..... TAN  
**METAL TRIM** ..... BLACK  
**CERTIFICATION** ..... YES  
**FRAME GAUGE** ..... 14 GAUGE  
**WALL STYLE** ..... CLOSED  
**WALL ORIENTATION** ..... HORIZONTAL  
**WALL COLOR** ..... TAN  
**END STYLE** ..... CLOSED, GABLED  
**END ORIENTATION** ..... HORIZONTAL  
**END COLOR** ..... TAN  
**GARAGE DOORS** ..... 6 CUSTOM FRAME OUTS  
**ACCESS DOORS** ..... N/A  
**WINDOWS** ..... N/A

**22' WIDE x 26' LONG x 8' TALL**

**LAND/CEMENT FOUNDATION MUST BE LEVEL**



- Cement should be 1 ft. shorter than roof length.
- Cement must be level and square from corner to corner.
- Return trip fees will apply if building is not installed.

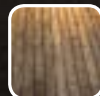


In order to get the highest quality installation, we ask to have the site prepared and ready to go on the day of installation. There should be no electrical wires less than 15 feet above the peak height and confirm no underground utilities will be impacted by the installation process (must be 4' or more beneath the impacted areas for ground installation). Remember, all of our structures come with free installation and free delivery.

**INSTALLATION SURFACES**



GRASS



WOODEN  
DECKING/DOCKS



GRAVEL



CONCRETE



DIRT

**SCAN TO VIEW ONLINE**



AVAILABLE PAINT COLOR CHOICES NOTE: ACTUAL COLORS MAY VARY



Barn Red



Burgundy



Brown



Forest Green



Beige



Sandstone



Tan



Galvalume



Clay



White



Dark Gray



Light Gray



Slate Blue

**PRICES VARY ON LOCATION • FREE DELIVERY & FREE INSTALLATION!**



SHOP ONLINE WITH INSTANT LOCAL PRICING AT [WWW.CARPORT.COM](http://WWW.CARPORT.COM)